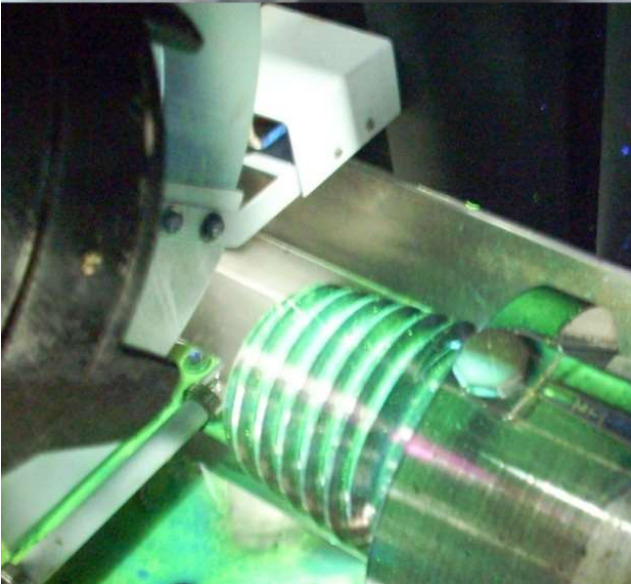
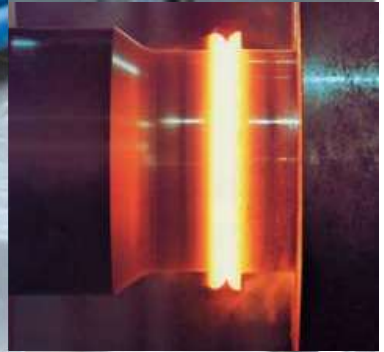


**Down The Hole (DTH) & Rotary Drill Pipes**



**ECDS**

EXPLORATION & CIVIL  
DRILLING SOLUTIONS B.V.

# Down The Hole (DTH) & Rotary Drill Pipes

**ECDS has partnered with Tier 1 manufacturers of drill pipes to meet customer specific requirements.**

ECDS offers a variety of services designed to improve services to our customers to get the most out of all our drilling product lines.

- Drill pipes are tailored to meet specific drilling applications
- We offers material grades per site application to better withstand extreme torsional and axial loads

## ECDS OFFERINGS

Based on the information collected over many years our partner has standardized the offerings in four product groups. A broad classification is listed below for your ready reference.

Description	Standard	Premium	Premium Alloy
<b>Tube Specification</b>	ASTM A106GrB	N-80	Alloy Steel
<b>Condition</b>	HFS	CDS up to 4.1/2"	HFS
<b>Tool Joint Material</b>	4140	4140	4340
<b>Core Hardness</b>	29 - 32 HRC	29 -32 HRC	32 -34 HRC
<b>Surface Hardness on Threads</b>	-	58-62 HRC	Hard Banding
<b>Max. Case Depth</b>	-	0.2 mm	-
<b>Anti Galling Treatment</b>			
<b>Joint Selection</b>	Up to 6.1/4" FW, beyond that Shrink fit & SAW		Threaded Connections



## ECDS DRILL PIPE ADVANTAGES:

- Customized application design that enables our customers to choose the correct material specifications and wall thickness.
- Out state of the art manufacturing facility enables us to ensure a consistent quality and integrity for all our products.
- Efficient and reliable delivery through inventory management.
- Adherence to the highest global quality standards
  - ISO 9001:2015 certifications
- The lowest overall cost of ownership for all drilling products.



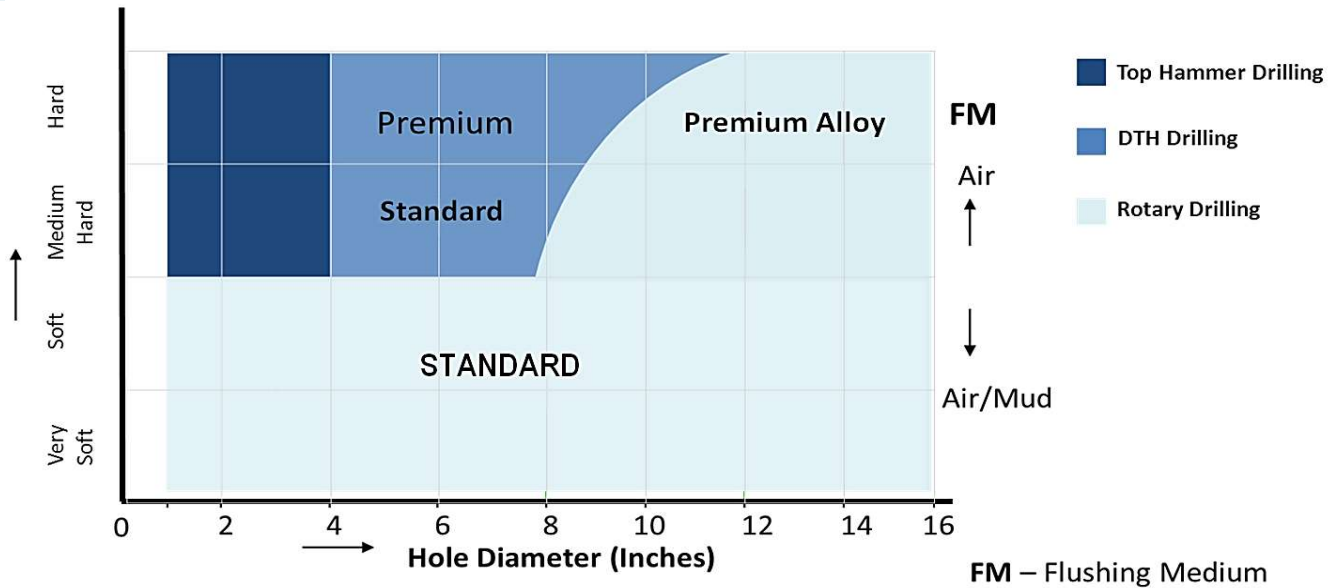
**ECDS**

EXPLORATION & CIVIL  
DRILLING SOLUTIONS B.V.

## Down The Hole (DTH) & Rotary Drill Pipes

### SELECTION GUIDE FOR DTH & ROTARY DRILL PIPES.

We have the most cost-effective drilling methods with the choice of the correct specification of drill pipes, to help you find the right solution for your needs.



### TOOL JOINTS

- We use high quality alloy for all tool joints. Based on the application, higher grades of alloy joints are available.
- Tool joints are turned and bored prior to heat treatment by a quench and temper process that produces a uniform microstructure, high ductility and other mechanical properties in accordance with API specifications.
- All of our threads are precision machined on CNC lathes. Each and every thread is inspected for MPI and gauge stand offs.
- Hard banding is offered on all of our product range to ensure longer lasting tool joints.



# ECDS

EXPLORATION & CIVIL  
DRILLING SOLUTIONS B.V.

# Down The Hole (DTH) & Rotary Drill Pipes

## RECOMMENDED THREAD CONNECTIONS

Outside Diameter	Wall Thickness	Recommended Connection
2 7/8"	0.20" 0.25"	2 3/8" API Reg.
3"	0.25"	2 3/8" API Reg.
3 1/2"	0.25"	2 3/8" API Reg. 2 7/8" API Reg. 2 7/8" API IF.
4"	0.25" 0.35"	2 7/8" API IF
4 1/2"	0.35" 0.50"	3 1/2 " API Reg. 3 1/2 " BECO
5"	0.35" 0.50" 0.63"	3 1/2 " API Reg. 3 1/2 " BECO
5 1/2"	0.50" 0.75"	3 1/2 " BECO
6"	0.75"	4" BECO
6 1/4"	0.50" 0.75"	4" BECO
6 1/2"	0.87"	4 1/2" BECO
7"	0.75" 1.00"	4 1/2" BECO 5 1/4" BECO
7 5/8"	0.75" 1.00"	5 1/4" BECO
8"	0.50" 0.75" 1.00"	5 1/4" BECO
8 5/8"	0.75" 1.00"	6" BECO
9"	0.75" 1.00"	7" BECO
9 1/4"	1.00" 1.25"	6" BECO
10 1/4"	1.25"	8" BECO
10 3/4"	1.00" 1.25"	8" BECO
12 3/4"	1.00"	8" BECO
13 3/8"	1.00" 1.25" 1.50"	10" BECO

We recommend various thread connections for drill pipes of different diameters and wall thicknesses to suit specific requirement of different drill machine models.

Drill pipes are equipped with heavy duty thread protectors in order to protect the threads during transit and storage.



**ECDS**

EXPLORATION & CIVIL  
DRILLING SOLUTIONS B.V.

# Down The Hole (DTH) & Rotary Drill Pipes

## DRILL PIPE PRODUCT RANGE

Diameter		Wall Thickness		Thread Types	Length
Inch	mm	inch	mm	Thread (Pin/Box)	ft
2.875	73	0.250	6.35	2 3/8" API REG	6', 8', 10', 12', 15'
2.875	73	0.346	8.78	2 3/8" API REG	6', 8', 10', 12', 15'
3.000	76	0.157	3.99	2 3/8" API REG	6', 8', 10', 12', 15', 20'
3.000	76	0.250	6.35	2 3/8" API REG	6', 8', 10', 12', 15', 20'
3.500	89	0.250	6.35	2 3/8" API IF	6', 8', 10', 12', 15', 20'
3.500	89	0.346	8.78	2 3/8" API IF	6', 8', 10', 12', 15', 20'
4.000	102	0.250	6.35	2 7/8" API IF	16', 20'
4.000	102	0.346	8.78	2 7/8" API IF	16.4', 20'
4.500	114	0.250	6.35	3 1/2" API REG	5', 7', 10', 12', 16', 20', 30'
4.500	114	0.346	8.78	3 1/2" API REG	5', 7', 10', 12', 16', 20', 30'
4.500	114	0.500	12.70	3 1/2" API REG	5', 7', 10', 12', 16', 20', 30'
4.500	114	0.250	6.35	3" BECO	5', 7', 10', 12', 16', 20', 30'
4.500	114	0.346	8.78	3" BECO	5', 7', 10', 12', 16', 20', 30'
4.500	114	0.500	12.70	3" BECO	5', 7', 10', 12', 16', 20', 30'
5.000	127	0.375	9.53	3 1/2" API REG	20', 25', 32.75', 33', 35', 36'
5.000	127	0.500	12.70	3 1/2" API REG	20', 25', 32.75', 33', 35', 36'
5.000	127	0.625	15.88	3 1/2" API REG	20', 25', 32.75', 33', 35', 36'
5.000	127	0.375	9.53	3 1/2" BECO	20', 25', 32.75', 33', 35', 36'
5.000	127	0.500	12.70	3 1/2" BECO	20', 25', 32.75', 33', 35', 36'
5.000	127	0.625	15.88	3 1/2" BECO	20', 25', 32.75', 33', 35', 36'
5.500	140	0.500	12.70	3 1/2" BECO	25', 30', 35'
5.500	140	0.750	19.05	3 1/2" BECO	25', 30', 35'
6.000	152	0.750	19.05	4" BECO	20', 25'
6.000	152	1.000	25.40	4" BECO	20', 25'
6.250	159	0.750	19.05	4" BECO	30', 35'
6.500	165	0.750	19.05	4 1/2" BECO	30', 35'
6.500	165	1.500	38.10	4 1/2" BECO	30'
7.000	178	0.750	19.05	5 1/4" BECO	25', 30'
7.000	178	1.000	25.40	5 1/4" BECO	25', 30'
7.625	194	0.750	19.05	5 1/4" BECO	25', 30', 35'
7.625	194	1.000	25.40	5 1/4" BECO	25', 30'
7.625	194	0.750	19.05	6" BECO	25', 30'
7.625	194	1.000	25.40	6" BECO	25', 30'
8.000	203	0.500	12.70	5 1/4" BECO	25', 35'
8.000	203	0.750	19.05	5 1/4" BECO	25', 35'
8.000	203	1.000	25.40	5 1/4" BECO	25', 35'
8.625	219	0.875	22.22	6" BECO	25', 35'
8.625	219	1.000	25.40	6" BECO	25', 35', 40'
9.000	229	0.750	19.05	7" BECO	25', 35'
9.000	229	1.000	25.40	7" BECO	25', 35'
9.250	235	1.000	25.40	6" BECO	32.5'
9.250	235	1.500	38.10	6" BECO	32.5'
9.250	235	1.250	31.75	6" BECO	35'
10.000	254	0.750	19.05	8" BECO	25', 30'
10.000	254	1.000	25.40	8" BECO	25', 30'
10.250	260	1.500	38.10	8" BECO	30', 40'
10.750	273	0.750	19.05	8" BECO	25', 30'
10.750	273	1.000	25.40	8" BECO	25', 30'
10.750	273	1.500	38.10	8" BECO	30', 40'
12.750	325	1.000	25.40	8" BECO	35'
13.380	340	1.000	25.40	10" BECO	35'
13.380	340	1.125	31.75	10" BECO	35'
13.380	340	1.500	28.10	10" BECO	35'

When enquiring please specify Outer diameter, Wall thickness, Length, Thread connections & Wrench Slot Details.  
Any other size that does not appear in the above list can also be offered on request.

Notes:

A series of horizontal dotted lines for taking notes, starting below the 'Notes:' label and extending across the width of the page.



**ECDS**

EXPLORATION & CIVIL  
DRILLING SOLUTIONS B.V.





**ECDS**

EXPLORATION & CIVIL  
DRILLING SOLUTIONS B.V.