

Best Solution for Every Exploration Drilling site.



HANJIN D&B
Drilling Equipments Co., Ltd.

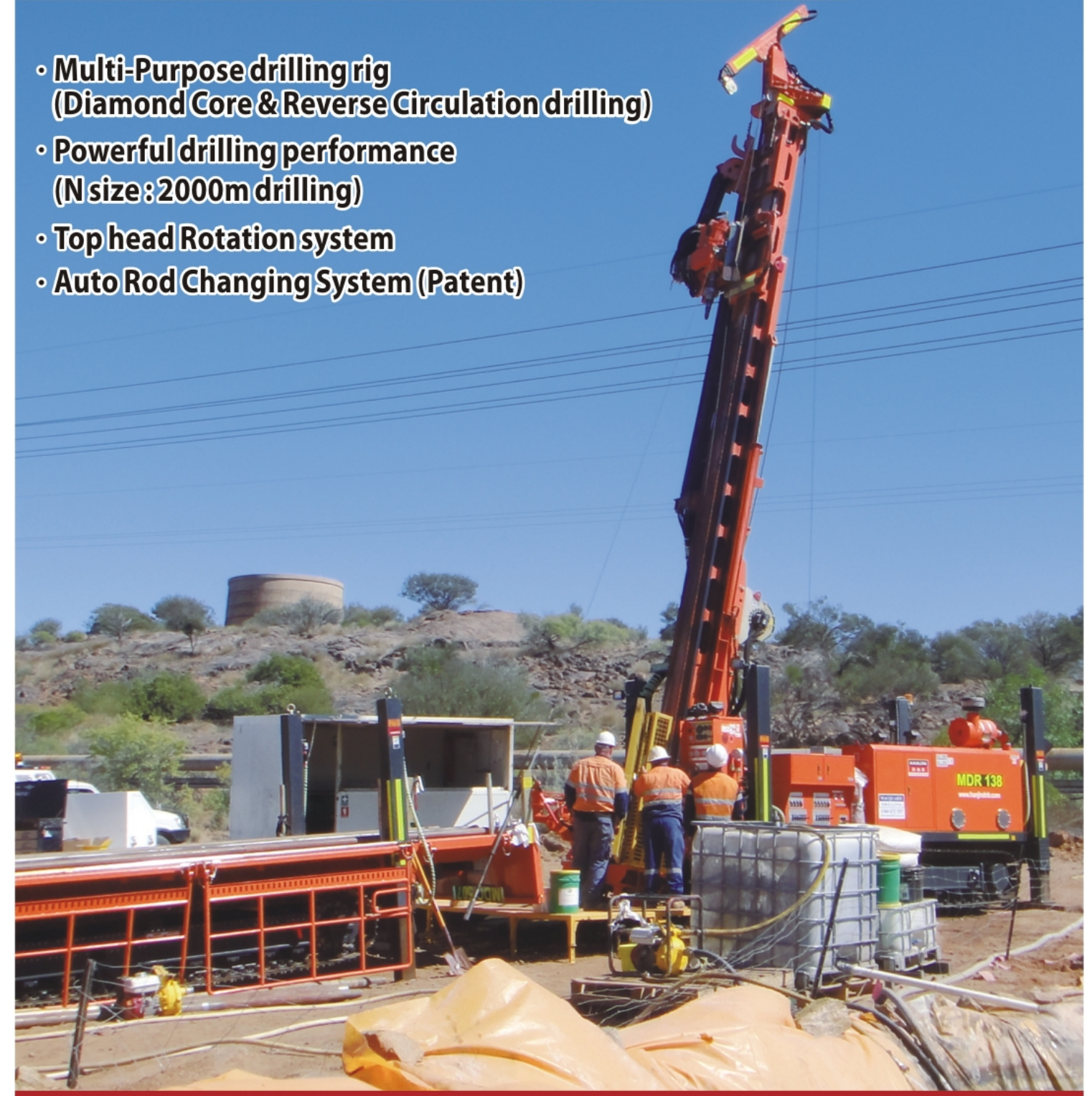
Distributed by

- 49, Hanamsandan 10-Ro, Gwangsan-Gu, Gwangju, Republic of Korea
- TEL_ +82-62-953-4525 • FAX_ +82-62-953-4520
- E-mail_ mail@hanjindnb.com
- Website_ www.hanjindnb.com



Multi-Purpose Drilling Rig D&B-35 Multi/RC/RAB

- Multi-Purpose drilling rig
(Diamond Core & Reverse Circulation drilling)
- Powerful drilling performance
(N size : 2000m drilling)
- Top head Rotation system
- Auto Rod Changing System (Patent)



www.hanjindnb.com

Why D&B Exploration Drilling Rigs?

• World best quality products

Manufacturing high technology same as Water hammer, Sonic drill development.

• High technical Know-how

Producing more than 3000 rigs in the last 24 years

• Experience for Worldwide market

UK, Germany, Portugal, France, Italy, Czech, Slovakia, Greece, Romania, Kosovo, Hungary, Russia, Iraq, Qatar, Australia, New Zealand, Chile, Peru, Mexico, USA, Taiwan, Philippine, Indonesia, Malaysia, Singapore, HongKong, Mongolia, S Kazakhstan, South Africa, Congo, Mozambique, Sierra Leone, Tanzania, SUDAN, Ethiopia, Egypt, etc

• Management

Fast delivery time & Easy maintenance system

Multi-Purpose Drilling Rig D&B-35 Multi

1. Multi-purpose drilling rig (RC, Diamond, Non-core rotary, De-watering drilling, etc)
2. Powerful drilling
3. Top head rotation system
4. Unique Jib Crane : Useful angle drilling & casing handling.
5. Unique hydraulic drive Mud pump (Variable volume control)
6. Reverse Circulation drilling : 400m drilling (5 inch)
7. Wireless Remote control system (Option)
8. Rod Loader / Easy drill pipe changing system (Option)
9. Truck mounted type is available (Option)

D&B's Other Products

R/C Hammer & Bits



- High drilling speed
- Long life time
- Special bit design

Sonic Drill



- Full hyd. system (Patent)
- Max. Vibration hammering (Max. 1800VPM)
- Constant amplitude

Water Hammer



- Deep hole drilling (5000m)
- Water pressure control system
- Water recycling system

Compressor/Double Compressor



- Less fuel consumption (Max. 10%)
- Special products for R/C drilling (Double compressor)

DTH Air Hammer



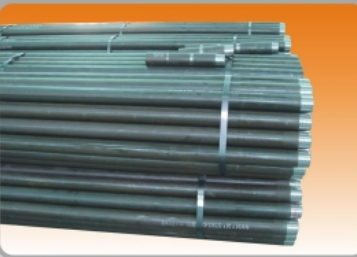
- Powerful drilling speed
- Low air consumption system
- Special D&B design

Rod Carrier



- Multi-Purpose transport car
- Max. climbing degree 30%
- Model : 7CR, 10CR, 15CR, 25CR
- Rod Loader (Option)

Drill Pipe



- R/C drill pipe
- Waterwell
- Core drill pipe (B, N, H, P size)

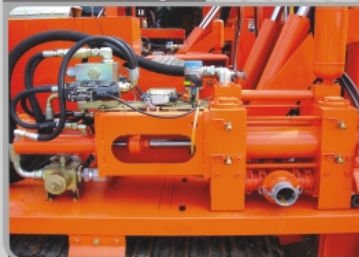
Mud Pump



- Full hydraulic drive system
- Compact size design
- Model : 300, 800, 1200, 1500L

D&B-35 Multi Key Components

Mud Pump



- Full Hydraulic drive system
- Unique D&B design & Made
- Variable volume control
- Low maintenance cost

Jib Crane



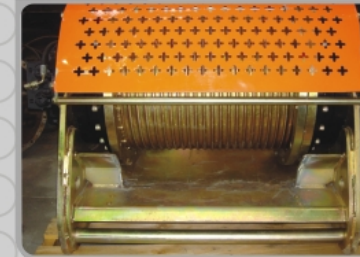
- Safe & easy operating
- Special D&B design & Made
- Powerful working

Rotary Head



- Strong rotation power
- Special D&B design & Made
- Top head rotation system
- Low maintenance cost
- Special air swivel design

Winch



- Strong power
- Special D&B design & Made
- Speed control system

Self Loading Jack



- Crawler type only
- Special D&B design & Made
- Easy transport system

Cyclone & Splitter (option)



- D&B's own technology
- Convenience of work
- Effective works

Rod Handler



- Convenience of work
- D&B's own technology
- Effective works

Wire Line



- Strong power
- Special D&B design & Made
- Speed control system

Worldwide Site

Australia (D&B-35Multi/A)



Peru (D&B-35Multi/P)



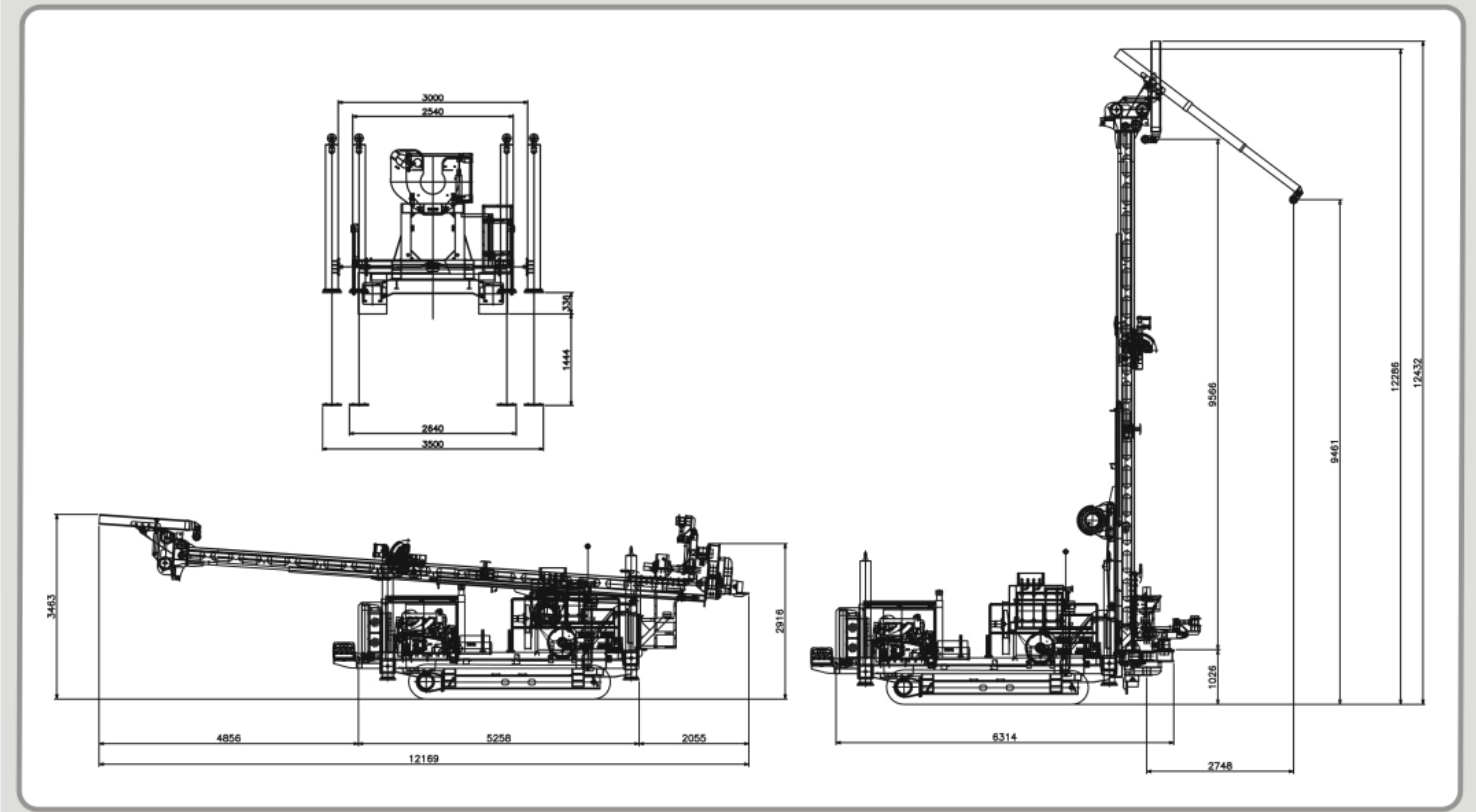
Senegal (D&B-35RAB)



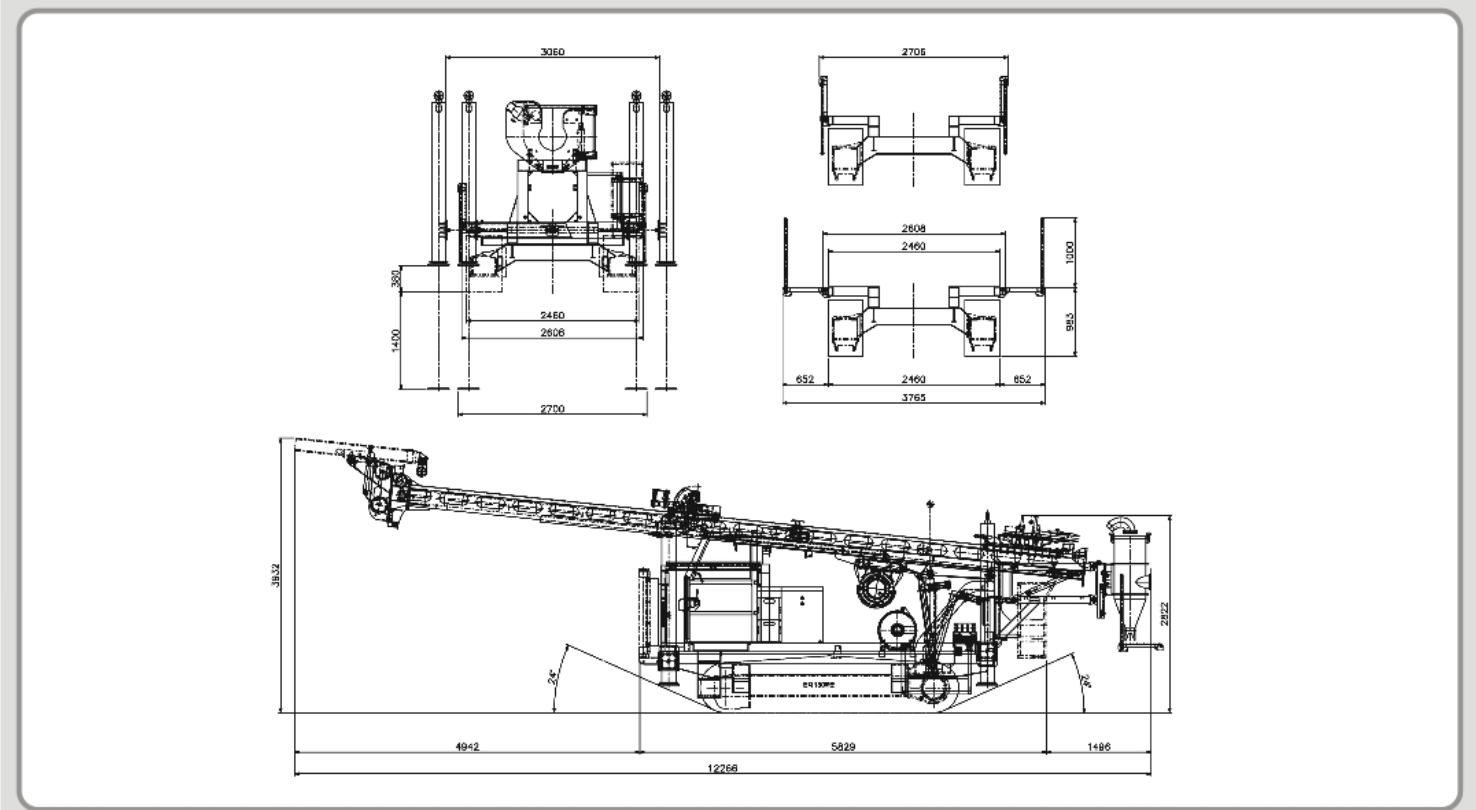
Indonesia (D&B-35RC)



D&B-35Multi / A



D&B-35Multi / P



		D&B-35Multi / A	D&B-35Multi / P	D&B-35RAB
DIMENSIONS & WEIGHT				
OA length-transport	M	12.1	12.3	11.8
OA width	M	2.6	2.6	2.54
OA height-transport	M	3.2	3.2	3.2
OA height-mast up	M	12	12	11.7
Weight without drilling accessories	Ton	17	19	21
ENGINE				
Model(Diesel engine)		DOOSAN DL08/086Ti	HYUNDAI D6HA	HYUNDAI D6CC
Cylinder		6	6	6
Rated power at 1800rpm	HP	285/280	380	540
Fuel capacity	ℓ	550	550	1,000
Cooling system		water cooling	water cooling	water cooling
TOP HEAD ROTATION				
Model		Gearbox 900	Gearbox 900	Gearbox 900
Reduction		Super gear -4.35 to 1	Super gear -4.35 to 1	Super gear -4.35 to 1
Performance		two motor(Std)	two motor(Std)	two motor(Std)
Max. RPM/Torque (1st)	rpm/kNm.kg-m	1,100~700 / 95~178	1,100~700 / 95~178	1100~700 / 95~178
Max. RPM/Torque (2nd)	rpm/kNm.kg-m	636~450 / 150~280	636~450 / 150~280	636~450 / 150~280
Max. RPM/Torque (3rd)	rpm/kNm.kg-m	470~327 / 205~390	470~327 / 205~390	470~327 / 205~390
Max. RPM/Torque (4th)	rpm/kNm.kg-m	120~0 / 600~1,100	120~0 / 600~1,100	120~0 / 600~1100
GEAR BOX SLIDING				
Travel	mm	400	400	400
FEED SYSTEM				
Top head driven by hydraulic cylinders through heavy duty chain.				
Traverse cylinder	mm x mm x mm	160 x 100 x 3,500	160 x 100 x 3,500	160 x 100 x 3,500
Max.Torque	kNm	30	30	30
feed force	kN	250	250	250
Head travel(1st)	m	7.0	7.0	7.0
Dump mast/up	m	0.5	0.5	0.5
Dump mast/Down	m	1.5	1.5	1.5
Pull-up capacity	ton	30ton	30ton	30ton
Pull-down capacity	ton	18ton	18ton	18ton
Feed speed -down (variable)	m/min	0~10	0~10	0~10
Fast feed speed - up (variable)	m/min	30	30	30
Fast feed speed -down (variable)	m/min	35	35	35
WORKING TABLE				
Max. casing diameter	"	10	10	10
HYDRAULIC CLAMP				
Single / Double Clamp	inch	10	10	10
CRAWLER BASE				
Undercarriage		Solar 75 (Motor:Solar 130)	Solar 130	Solar 130
Travelling speed	km/h	2.5	2.5	2.5
Ground pressure	N/cm ² , kg/cm ²	5,0.5	6,0.6	6,0.6
Ground clearance	mm	450	500	500
track shoes		3-web track shoes	3-web track shoes	3-web track shoes
Traction force	kN	70,000	70,000	70,000
Length of crawler units	mm	7,290	9,170	9,170
Climbing capacity Max.	%/degree	25°	25°	25°
JIB CRANE				
Extension	mm	2,450	2,450	2,450
Loading Capacity	Max. Kgs	150-520	150-520	150-520
Turn	degree	80	80	80
SELF LOADING (Hydraulic 4 Jacks)				
Ground clearance	mm	1,444	1,444	
HYDRAULIC OUTRIGGER JACKS				
Four hydraulic outriggers are fitted to the outer corners of the rig for easy and accurate levelling of the rig.				

		D&B-35Multi / A	D&B-35Multi / P	D&B-35RAB
DRILL PIPE BREAKOUT				
Torque break-out	ton	4	4	4
WINCH				
Spool capacity		30M of 19mm cable	30M of 19mm cable	30M of 19mm cable
Line pull	Ton	17	17	17
HYDRAULIC SYSTEM				
System		4pump open loop	4pump open loop	4pump open loop
Hydraulic oil tank capacity	ℓ	260	260	260
Filtration	micron	10	10	10
Pump model		H5V140x2+H3V63S+Pilot	H5V140x2+H3V63S+Pilot	H5V140x2+H3V63S+Pilot
Cooling system		Air cooling	Air cooling	Air cooling
Operating pressure	bar	280	280	280
Operating condition at job site	-30°~+45°	-30°~+45°	-30°~+45°	-30°~+45°
Flow rate 1st circuit	ℓ/min	252	252	252
Flow rate 2nd circuit	ℓ/min	252	252	252
Flow rate 3rd circuit	ℓ/min	63	63	63
Flow rate 4th circuit	ℓ/min	63	63	63
LIGHT & ELECTRICAL SYSTEM 24V				
One - on top of control facing up mast				
Two - on top of mast casing down				
one: to work table area				
one: back to drill deck				
One - in control console for night operation				
CONTROL PANEL				
All controls gauges are grouped at the operator's station within sight of the borehole.				
DRILL PIPE & CASING				
Max. Length	m	6	6	6
WATER INJECTION PUMP				
(High pressure washing pump)	ℓ/min, bar	60/35	60/35	60/35
LUBRICATION				
	ℓ/min	20	20	20
WIRE LINE				
		2,000M of 6mm or 8	2,000M of 6mm or 8	2,000M of 6mm or 8
OPTION				
1. Compressor	psi/cfm	350/1070	350/1070	350/1070
2. Mud Pump				
Model		D&B-300MP/D&B-FMC Pump	D&B-300MP/D&B-FMC Pump	D&B-300MP/D&B-FMC Pump
Valve		steel ball type	steel ball type	steel ball type
3. Welder				
Hyd. Motor Drive		250 Amp.DC	250 Amp.DC	250 Amp.DC
4. Rod handling system				*ROD RACK FOR 100M-89mmX6m(2 3/8 API IF)
5. Remote control for tramping				*ROD LOADER 1TON-CAPACITY Wireless control
- Wireless				
Drilling Performance				
Tricon drilling		4"~14", Max. 1,000M	4"~14", Max. 1,000M	4"~14", Max. 1,000M
DTH drilling		4"~14", Max. 1,000M	4"~14", Max. 1,000M	4"~14", Max. 1,000M
P size drilling	m	500	500	500
H size drilling	m	1,200	1,200	1,200
N size drilling	m	2,000	2,000	2,000
Notice				
Above drilling depth will be changed by job-site & working Condition.				