

Best Solution for Every Drilling site.



HANJIN D&B
Drilling Equipments Co., Ltd.

Distributed by

- 49, Hanamsandan 10-Ro, Gwangsan-Gu, Gwangju, Republic of Korea
- TEL_ +82-62-953-4525 • FAX_ +82-62-953-4520
- E-mail_ mail@hanjindnb.com
- Website_ www.hanjindnb.com



Geothermal Drilling rig **D&B-16W Series**

- Geothermal Drilling
- Waterwell Drilling
- Deck mounted Compressor (Option)
- Unique designed Mud pump (Full hydraulic drive)



www.hanjindnb.com

Why D&B Drill Rigs?

- **World best quality products**

Manufacturing high technology same as Water hammer, Sonic drill development.

- **High technical Know-how**

Producing more than 3000 rigs in the last 24 years

- **Experience for Worldwide market**

UK, Germany, Portugal, France, Italy, Czech, Slovakia, Greece, Romania, Kosovo, Hungary, Russia, Iraq, Qatar, Australia, New Zealand, Chile, Peru, Mexico, USA, Taiwan, Philippine, Indonesia, Malaysia, Singapore, HongKong, Mongolia, S Kazakhstan, South Africa, Congo, Mozambique, Sierra Lone, Tanzania, SUDAN, Ethiopia, Egypt, etc

- **Management**

Fast delivery time & Easy maintenance system

D&B Drill rigs & Products

RC Drill



Diamond core drill



HDD drill



Rock Drill



Truck mounted type



Compressor



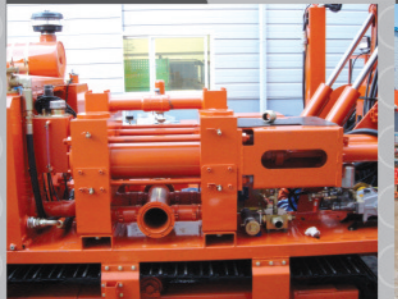
Water hammer



Sonic drill



Mud pump



Double compressor



Carrier



RC/ DTH hammer & bit
RC/Diamond pipe(Drill rod)



Geothermal drilling rig D&B-16W Series

1. Drill up to 600M with 4" and up to 12" for waterwell & micro pile.
2. Dual Rotary System (Max. 12") can be mounted on this drill as option.
3. Vertical, Angle Drilling available.
4. Available for Down The Hole, Rotary Drilling.
5. Strong mast design increases stability.
6. Reduce the cost of drilling accessories and wear & tear upto 30~50% such as bit, wearing parts & Diesel and so on.
7. Easy to load and unload.
8. Quick set up.
9. Vertical, Incline & Horizontal Boring are available as option.
10. Low maintenance and operating cost.
11. Easy to repair the machine due to fill Hyd. system.
12. Truck mounted type is also available.

D&B-16W Series Key components

Self Loading



Rotary Head



Compressor



Control box



TopWinch



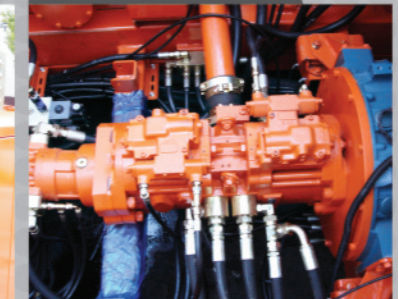
Wire Line



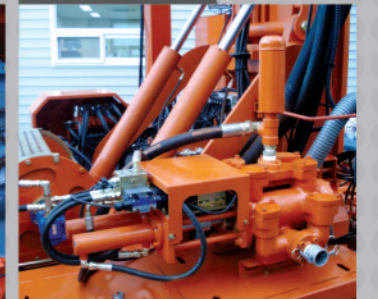
Welder



Main Hyd. Pump



Mud Pump



Around the world

Germany, Wassenberg



- D&B-16WCP500 (Compressor Mounted)
- Geothermal Drill : 100m

Germany, Moenchengladbach



- D&B-16WCP500 (Compressor Mounted)
- Geothermal Drill : 80m

UK, Glasgow



- D&B-16W (Multiversion)
- Geothermal Drill : 50m x 50Hole

Czech, Prague



- D&B-16WCP900 (Compressor Mounted)
- Geothermal Drill : 120m

South Africa, Johannesburg



- D&B-16W (Multiversion)
- Water well Drilling : 250m

Kosovo



- D&B-16WCP500 (Compressor Mounted)
- Geothermal Drill : 100m

Taiwan, Taidong



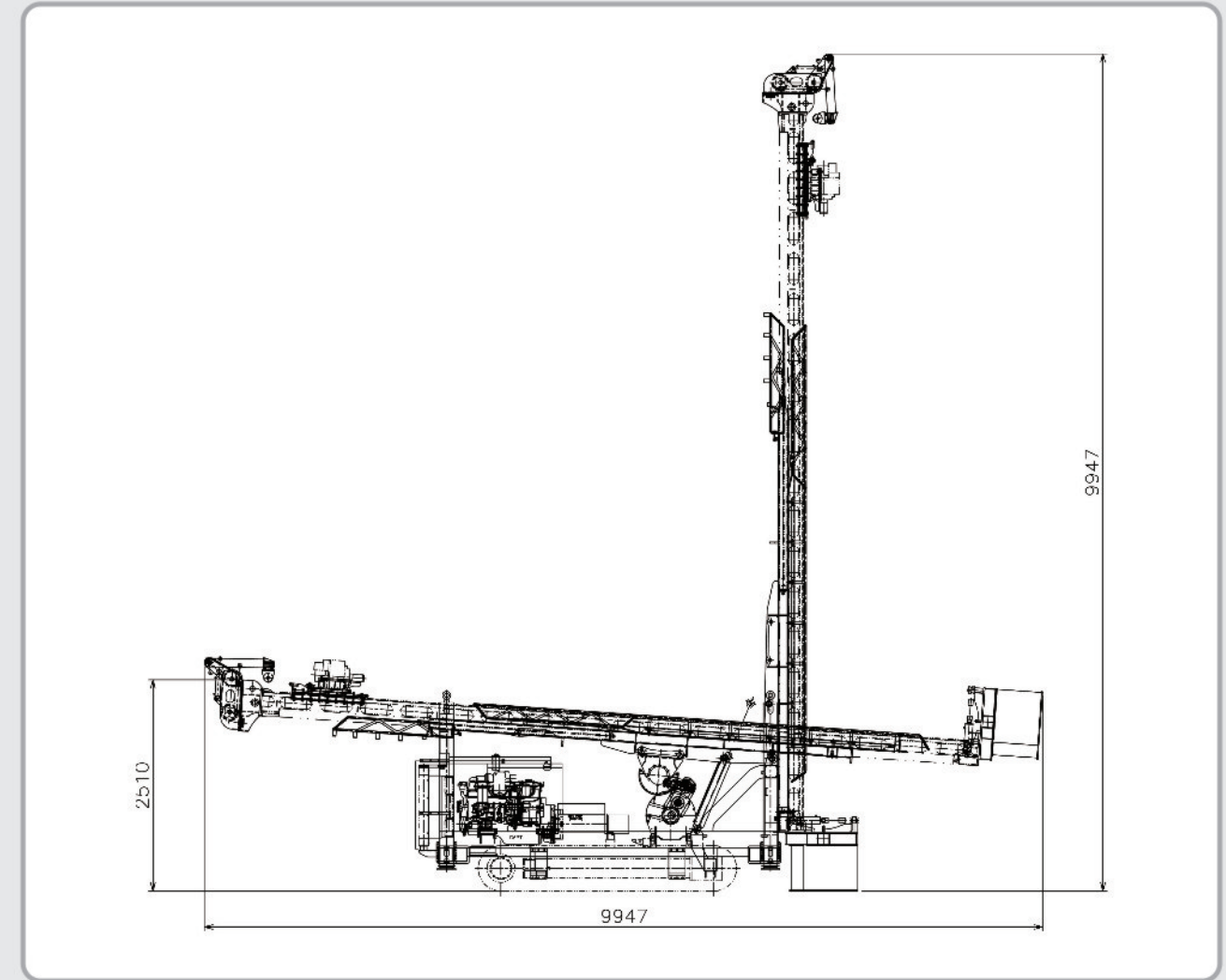
- D&B-16W
- Hotspring Drilling : 1,200m

Tanzania, Arusha

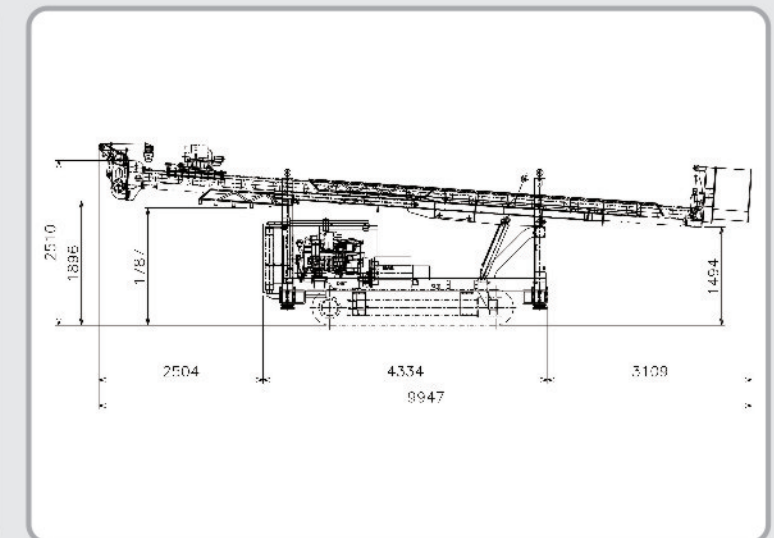
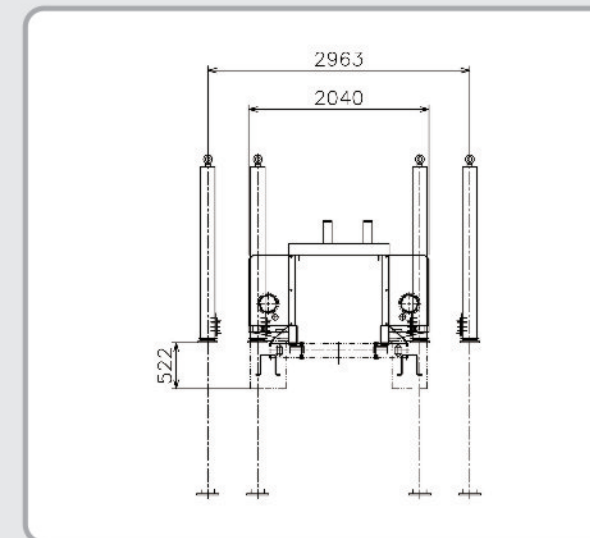


- D&B-16W
- Water well Drilling : 220m

Dimensions



Transport Dimension



		D&B-16W	D&B-16WCP500	D&B-16WCP750
DIMENSIONS & WEIGHT				
OA length-transport	M	8.7(7.0)	8.7(7.0)	8.7
OA width	M	2.2	2.2	2.2
OA height-transport	M	2.5	2.5	2.6
OA height-mast up	M	9.1(7.4)	9.1(7.4)	9.1
Weight without drilling accessories	Ton	7.5	8.5	10
ENGINE				
Model(Disel engine)		HYUNDAI D6BT	DOOSAN DL08	DOOSAN DL08
Cylinder		6	6	6
Rated power at 1800rpm	kw / ps	132/180	193/260	193/260
Fuel tank capacity	l	200	200	200
Fuel consumption	g/kwh		152	152
Cooling system		water cooling	water cooling	water cooling
Rotary HEAD				
Model		Gearbox 800	Gearbox 800	Gearbox 800
Reduction		Super gear - 4.35 to 1	Super gear - 4.35 to 1	Super gear - 4.35 to 1
1st RPM/Torque	rpm/kNm.kg-m	120/3.300	120/4,400	120/4,400
2nd RPM/Torque	rpm/kNm.kg-m	60/8.800	60/8.800	60/8.800
GEAR BOX Sliding				
Travel	mm	350	350	350
Option		Upper frame moving	Upper frame moving	Upper frame moving
FEED SYSTEM				
Top head driven by hydraulic cylinders through heavy duty chain.				
Traverse cylinder	mmxmmxmm	120x90x2750 (1900)	120x90x2750 (1900)	120x90x2750
Total length including extension (L*W*H)	mm	7000x3900x9100(7400)	7000x3900x9100(7400)	7000x3900x9100
Max. Torque	kNm	30	30	30
Feed force	kN	250	250	250
Head travel (1st)	m	5.5	5.5	5.5
Dump mast / Up	m	1.5	1.5	1.5
Dump mast / Down	m	0.5	0.5	0.5
Pull-up capacity	top/kN	16ton/160kN	16ton/160kN	16ton/160kN
Pull-down capacity	ton/kN	8ton/80kN	8ton/80kN	8ton/80kN
Feed speed-down (variable)	m/min	0~10	0~10	0~10
Fast feed speed-up (variable)	m/min	30	30	30
Fast feed speed-down (variable)	m/min	35	35	35
Max. casing diameter	mm	280	280	280
Hydraulic clamping				
Doubleclamp.Max Diameter (Standard version)	mm	280	280	280
Clamping size(Max)	mm	280	280	280
Clamping size(Min)	mm	76	76	76
Max.holding force	kN			
CRAWLER BASE				
Crawler type		Solar 55	Solar 55	Solar 55
Travelling speed	km/h	4	4	4
Ground pressure	N/cm ² , kg / cm ²	5,0.5	5,0.5	5,0.5
Shoes width	mm	400	400	400
Ground clearance	mm	400	400	400
Track shoes		3-web steel track shoes	3-web steel track shoes	3-web steel track shoes
Traction force	kN	70,000	70,000	70,000
Length of crawler units	mm	6480	6480	6480
Climbing capacity Max.	%/degree	25°	25°	25°
Option		Rubber type	Rubber type	Rubber type
JIB				
Extension	mm	450	450	450
Turn	degree	80	80	80

		D&B-16W	D&B-16WCP500	D&B-16WCP750
SELF LOADING				
Ground clearance	mm	1400	1400	1400
Width	mm	3100	3100	3100
HYDRAULIC OUTRIGGER JACKS DRILL PIPE BREAKOUT Four hydraulic outriggers are fitted to the outer corners of the rig for easy and accurate levelling of the rig.				
Torque break-out	ton	4	4	4
WINCH				
Spool capacity		24M of 12mm cable	24M of 12mm cable	24M of 12mm cable
Line pull	ton	5	5	5
HYDRAULIC SYSTEM				
System		Load sensing/4pump open loop	Load sensing/4pump open loop	Load sensing/5pump open loop
Hydraulic oil tank capacity	l	260	260	260
Filtration	micron	10	10	10
Pump model		H3V112x2+H3V63S+Pilot	H3V112x2+H3V63S+Pilot	H3V112x2+H3V63S+Pilot
Cooling system		Air cooling	Air cooling	Air cooling
Operating pressure	bar	280	280	280
Operating condition at job site	-30°~+45°	-30°~+45°	-30°~+45°	-30°~+45°
Flow rate 1st circuit	l/min	200	200	200
Flow rate 2nd circuit	l/min	120	120	120
Flow rate 3rd circuit	l/min	63	63	63
LIGHT & ELECTRICAL SYSTEM				
Mast	watt	2-60	2-60	2-60
Control panel		2-gauge floodlights	2-gauge floodlights	2-gauge floodlights
Work	watt	2-60	2-60	2-60

OPTION**1. Mud Pump**

D&B-200MP	l/min	200	200	200
D&B-300MP	l/min	300	300	300
D&B-800MP	l/min	800	800	800
D&B-1200MP	l/min	1200	1200	1200
D&B-1500MP	l/min	1500	1500	1500

2. COMPRESSOR

D&B-500CP	bar/cfm	21/500	21/500	21/500
D&B-750CP	bar/cfm	21/750	21/750	21/750

3. Water Injection pump

(High pressure washing pump)	l/min,bar	60/35	60/35	60/35
------------------------------	-----------	-------	-------	-------

4. WELDER

Hyd. Motor Drive		250 Amp.DC	250 Amp.DC	250 Amp.DC
------------------	--	------------	------------	------------

5. Rod handling system**Drilling Performance**

1. Waterwell Drilling Work : Max. 500m / 8 inch hole

Notice

Above drilling depth will be chaged by job-site & working Condition.



HANJIN D&B
Drilling Equipments Co., Ltd.